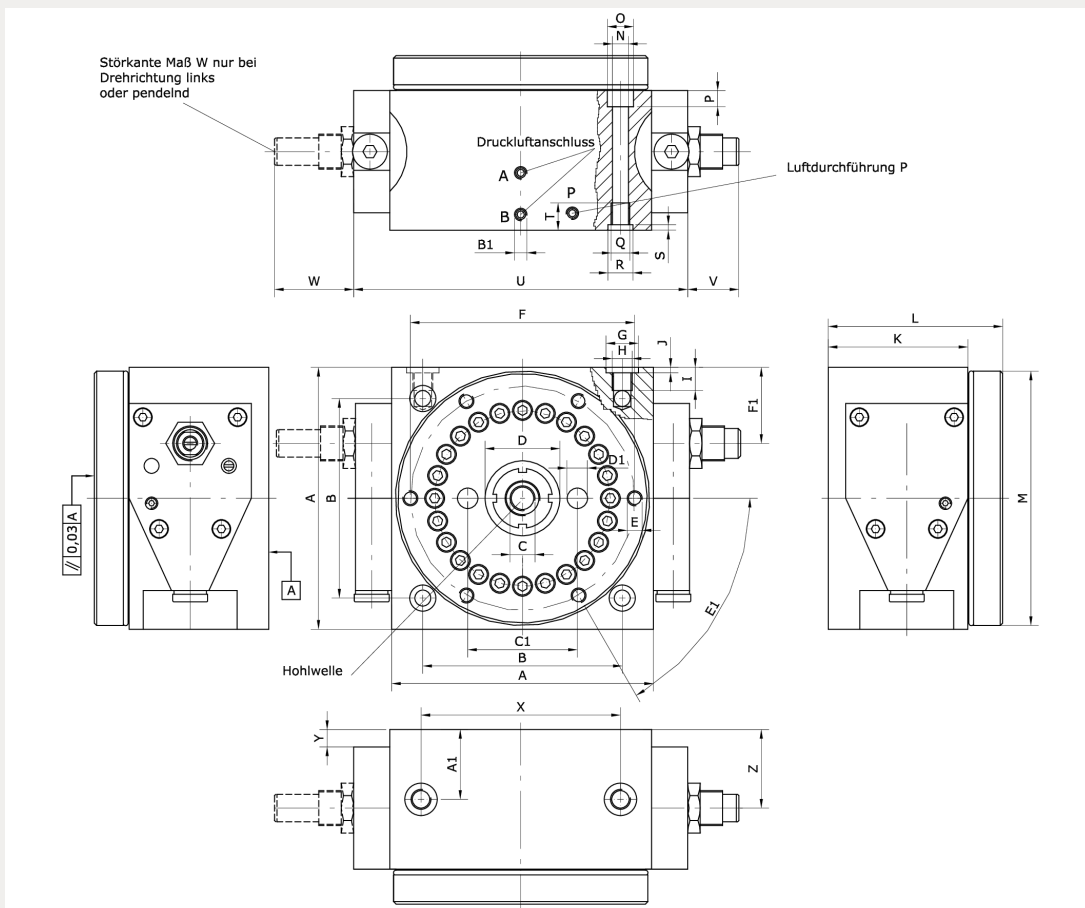


Technical data:

Partition:	2/ 3/ 4/ 6/ 8/ 12/ 24
Direction of rotation:	Right, left, oscillating
Partitioning accuracy:	at $\varnothing 120 \text{ mm} \pm 0,03 \text{ mm}$
Clamping weight:	up to 14 kg
Disk speed:	Adjustable
Cushioning:	Hydraulic end-position cushioning included in the scope of delivery
Mounting position:	arbitrary
Input torque (effective):	2 Nm
Torque transduction locked (static):	100 Nm
Cylinder- \varnothing :	25 mm
Inertia torque max.:	175 kgcm ²
Breakdown torque max.:	150 Nm
Lateral force transduction locked (static):	10 kN
Axial load:	20 kN (within $\varnothing 100 \text{ mm}$)
Axial load of the disk when pulling (static):	1.500 N
Axial load of the disk when pulling (dynamic):	140 N
Switches (1/min.):	80 – 200
Weight:	3,1 kg
Air consumption/double stroke:	40,5 cm ³
Drive:	Compressed air (5 – 8 bar), filtered and dried; lubricated or unlubricated
Plano-parallelism casing - disk:	0,03 mm
Axial runout disk:	0,03 mm
Circular runout centre bore:	0,03 mm
Control:	4/2- or 5/2-way valve, bistable, 24 V DC
Connection:	M5
Material of casing:	High-strength aluminium, with hard coat
Material of disk:	Steel
Movement type:	rotatory
Movement group:	turn



ArticleNo	Type	Partition	Cushioning
216148	RSE-P1-4-8-L-H	8	Hydraulic
Direction of rotation	A	B	C
left	105	80 ± 0,01	R1/8
D	E	F	G
Ø30 H7 2 deep	6 x M6/8 deep	Ø92	Ø13 k7
H	I	J	K
M8	18	2,1	56
L	M	N	O
70 ± 0,05	Ø102 ± 0,1	Ø6,4	Ø10,5
P	Q	R	S
6,5	M8	Ø13 k7	2,1
T	U	V	W
12	134	30	62
X	Y	Z	A1
80 ± 0,02	7	31,5	28
B1	C1	D1	E1
M5	46 ± 0,01	Ø6 H7/2,5 deep	6 x 60°

Loads

